

sepal

*supports the flower*



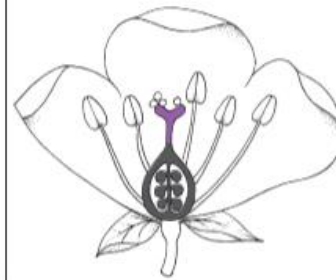
petal

*often green and protects the rest of the flower*



stamen

*often brightly coloured to attract insects*



pollen

*the male part of the flower, where pollen is made*



carpel

*dust-like powder made in the stamens*



stigma

*the female  
parts of the  
flower*



ovary

*the part of  
the carpel  
that the pollen  
sticks to*



ovule

*the part of  
the carpel  
that contains  
the ovules*



stem

*develops into  
the seed*

