

Subordinate Clauses



Clauses and Subordinates



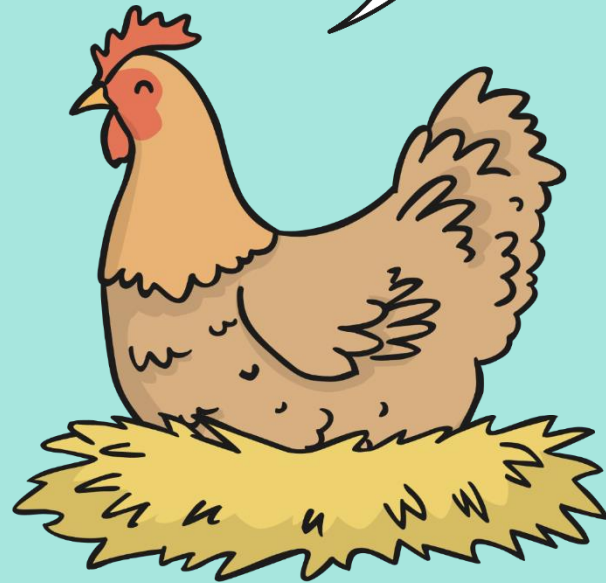
Clauses are groups of words which are built around a verb.

There are different types of clauses.

Imagine this big, fat chicken is the **main clause**.

It makes sense all by itself.

I am the **main clause** chicken!
Cluck, cluck.



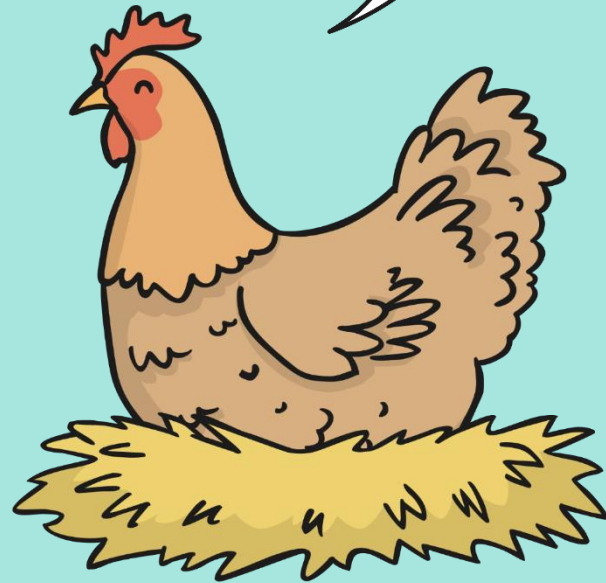
Clauses and Subordinates



Here is a **main clause**.

The chicken sat
on her eggs.

I am the **main
clause** chicken!
Cluck, cluck.



Clauses and Subordinates



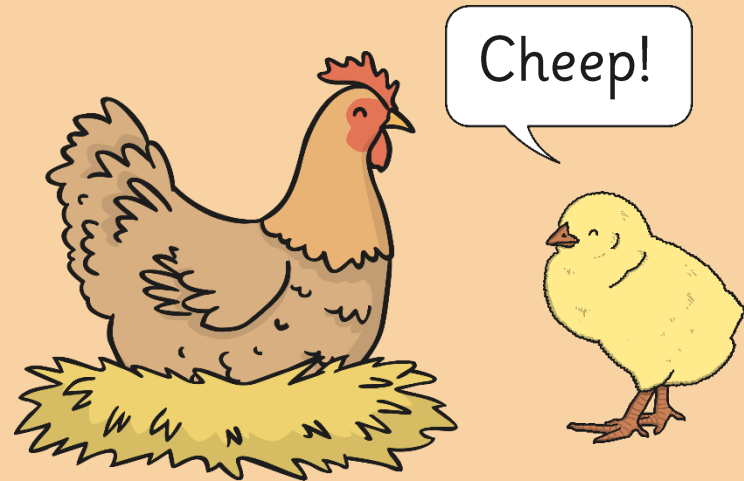
Subordinate clauses are clauses that tell us more about the main clause.

Imagine the chick is the **subordinate clause**.

The **subordinate clause** needs a main clause.

The **subordinate clause** only makes sense when it is with a main clause.

It relies on the big mother chicken (main clause).



main clause + **subordinate clause**

Clauses and Subordinates



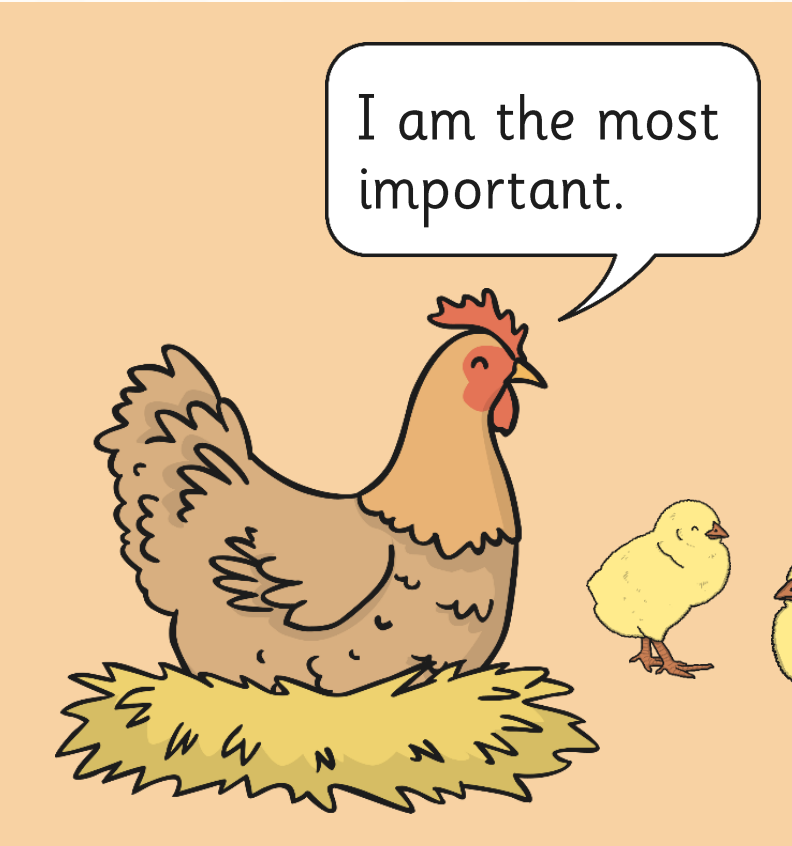
Here is a main clause.

Look what happens if you add a **subordinate clause**.

The chicken sat on her eggs
waiting for them to hatch.

main clause + **subordinate clause**

Clauses and Subordinates



I am the most important.

A main clause can have more than one **subordinate clause**.

The main clause remains the most important though.

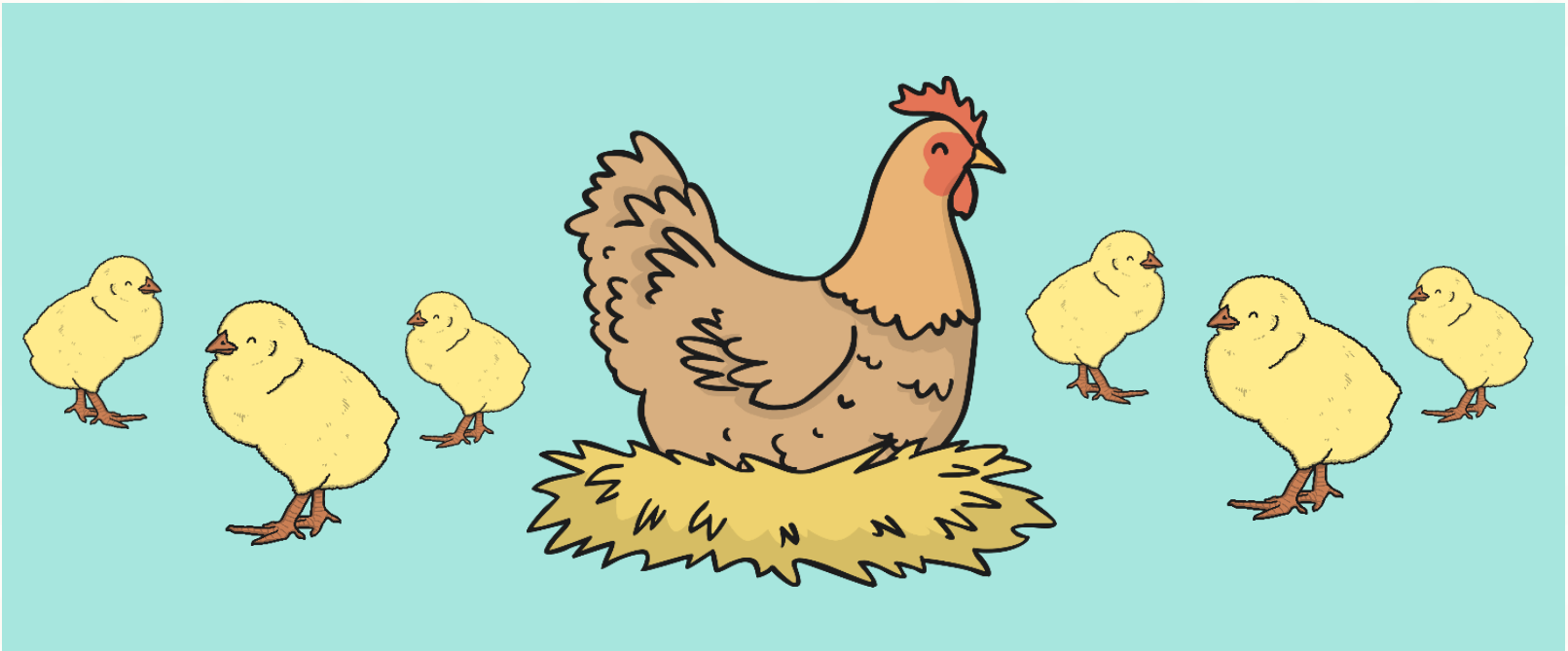
main clause + **subordinate clauses**

Clauses and Subordinates



Subordinate clauses can be at the beginning, the middle and the end of a sentence.

They can pop up anywhere!

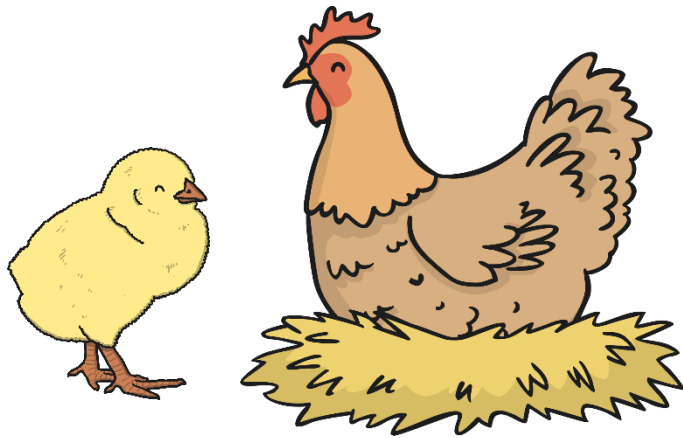


Where to Find Subordinate Clauses



Subordinate clauses are great because they make your writing better. They add detail, which makes your writing more interesting.

Subordinate clauses can go at the beginning.



subordinate clause
+ main clause

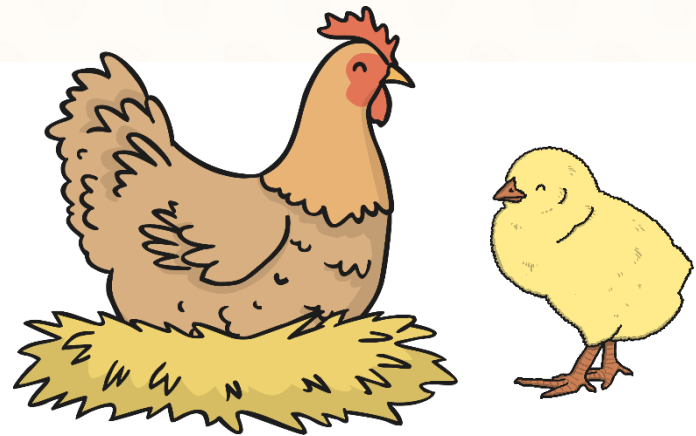
Sitting happily, the chicken laid eggs.

Where to Find Subordinate Clauses



Subordinate clauses can go at the end.

main clause +
subordinate clause

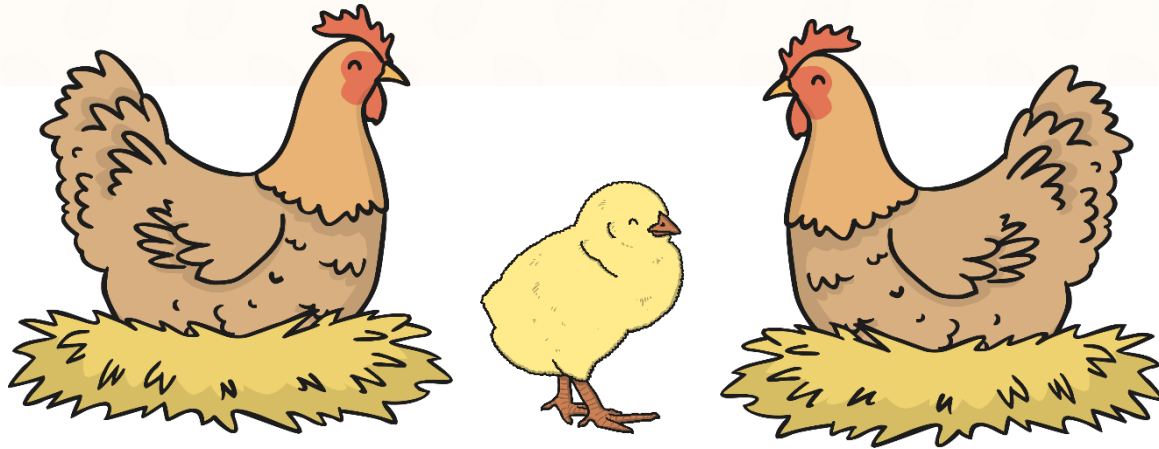


The chicken laid eggs, **sitting happily.**

Where to Find Subordinate Clauses



Subordinate clauses can go in the middle. This is also known as an embedded clause.



main clause + **subordinate clause** + main clause

The chicken, **who was busy laying eggs**, sat happily.