

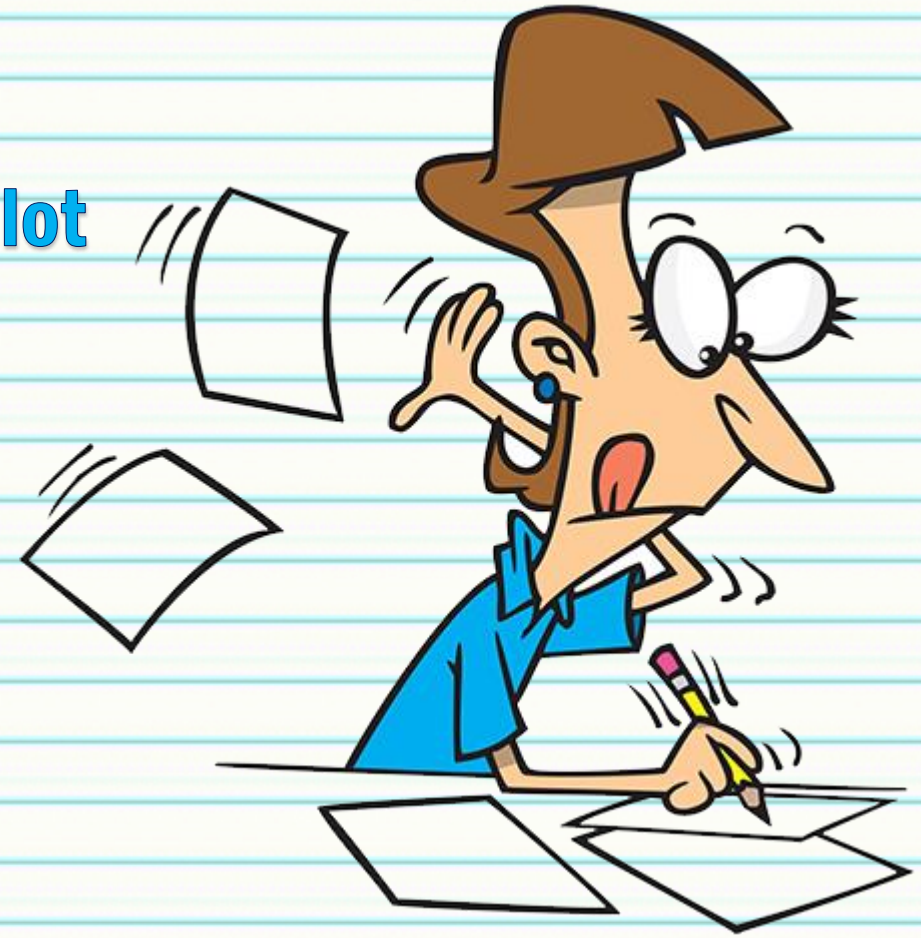
L.O: To identify the features of a non-chronological report.

Non-chronological reports

**Does anyone know what a non-
chronological report is?**

Purpose:

- Non-chronological reports don't have to be read in **any order**.
- Aim to give us information on a topic.
- Written to give other people **information**.
- Useful for **studying** things we don't know a lot about.
- Written in **paragraphs** often under sub-headings.
- Reports contain **specific features**.



Werewolves

Werewolves, also known as lycanthropes, are mythological or folkloric humans with the ability to shape-shift into a hybrid wolf-like creature. They are generally found in European and American folklore. The legend of the werewolf developed in parallel to the belief in witches and is still evident in popular culture today.

Introduction

How dangerous are they?

Often perceived as a threat throughout history, werewolves generally prey on any living thing; however they particularly target children. Werewolves attack in a variety of ways. The Scandinavian werewolf is known to use poison-coated claws. This creature uses its gaze to paralyze its victims, which delivers the final blow to the wounded. This is not always accurate. Some werewolves are known to target the graves of their victims; digging up bodies to consume to satisfy their cravings.

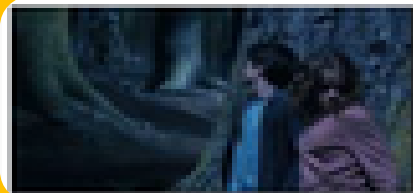
Main information

Appearance

Traditionally, a werewolf is indistinguishable from an ordinary wolf apart from several features. These are: a larger body, lack of a distinct tail, human eyes and voice. When a werewolf is in human form, they have tell-tale physical traits including: meeting of both eyebrows ('monobrow'), curved fingernails, low-set ears and a swinging stride.

Modern culture

Even after many centuries of tales, a fascination with werewolves still exists in modern society. The most popular depiction of a werewolf on film is in the renowned movie franchise: 'Twilight'. Another work of fiction which mentions these mythical beasts is 'Harry Potter'. This series of books features several werewolves (including Remus Lupin).

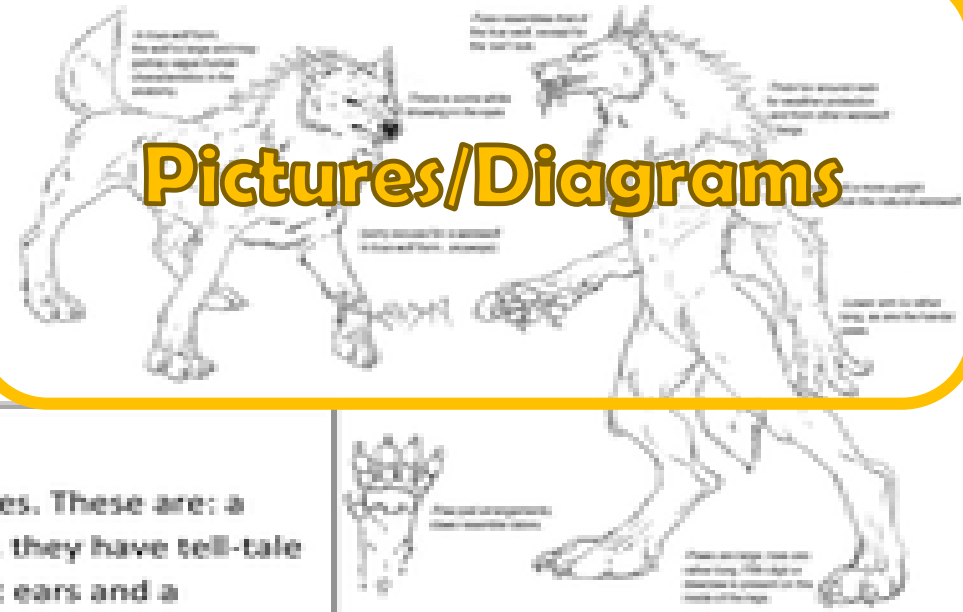


Sub-headings

Shape-shifting ability

Werewolves are humans who transition into wolf-like creatures, either purposefully or after being placed under a curse. Various methods of becoming a werewolf have been reported. In folklore, most werewolves originate from being cursed. **Present Tense & Third person** Historically, most werewolves transform under the light of a full moon. Some historical accounts suggest stranger methods of transformation, such as rubbing the body with magic ointment, drinking rainwater out of the footprint of the animal or repeating a set spell. After returning to their human form, werewolves are usually documented as becoming weak, debilitated and undergoing painful, nervous depression.

Pictures/Diagrams



Features of a non-chronological report:

Introduction -
What is the report about?

Sub-headings -
Separate your information.

Main information -
Facts about your topic.

Present Tense -
Imagine it is happening now.

Third Person -
Use he, she, it, etc.

Pictures/Diagrams -
What does it look like?

Your task:

So that you are clear with how to write a non-chronological report, I have provided three further examples for you to look at. Similar to the way I did with the werewolves text, label the examples with the features shown on the previous slide.

This will then help you with tomorrow's task, which will be to write our own non-chronological report on the information you should have researched about the Bloody Code.