



The Bloody Code

G	Non-Chronological Report
A	Anyone interested in learning about the Bloody Code
P	To provide information about the Bloody Code

Your task today is to write a non-chronological report all about the Bloody Code.

You must use the information you researched on Wednesday.

Werewolves

Werewolves, also known as lycanthropes, are mythological or folkloric humans with the ability to shape-shift into a hybrid wolf-like creature. They are generally found in European folklore and are often associated with the moon. The legend of the werewolf developed in parallel to the belief in witches and is still evident in popular culture today.

Introduction

How dangerous are they?

Often perceived as a threat throughout history, werewolves generally prey on any living thing; however they particularly target children. Werewolves attack in a variety of ways. The Scandinavian werewolf is known to have poison-coated claws. This creature uses its gaze to paralyze its victims, which allows the final blow to be delivered with shocking accuracy. Some werewolves are known to target the graves of their victims; digging up bodies to consume to satisfy their cravings.

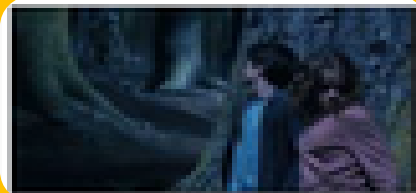
Main information

Appearance

Traditionally, a werewolf is indistinguishable from an ordinary wolf apart from several features. These are: a larger body, lack of a distinct tail, human eyes and voice. When a werewolf is in human form, they have tell-tale physical traits including: meeting of both eyebrows ('monobrow'), curved fingernails, low-set ears and a swinging stride.

Modern culture

Even after many centuries of tales, a fascination with werewolves still exists in modern society. The most popular depiction of a werewolf on film is in the renowned movie franchise: 'Twilight'. Another work of fiction which mentions these mythical beasts is 'Harry Potter'. This series of books features several werewolves (including Remus Lupin).

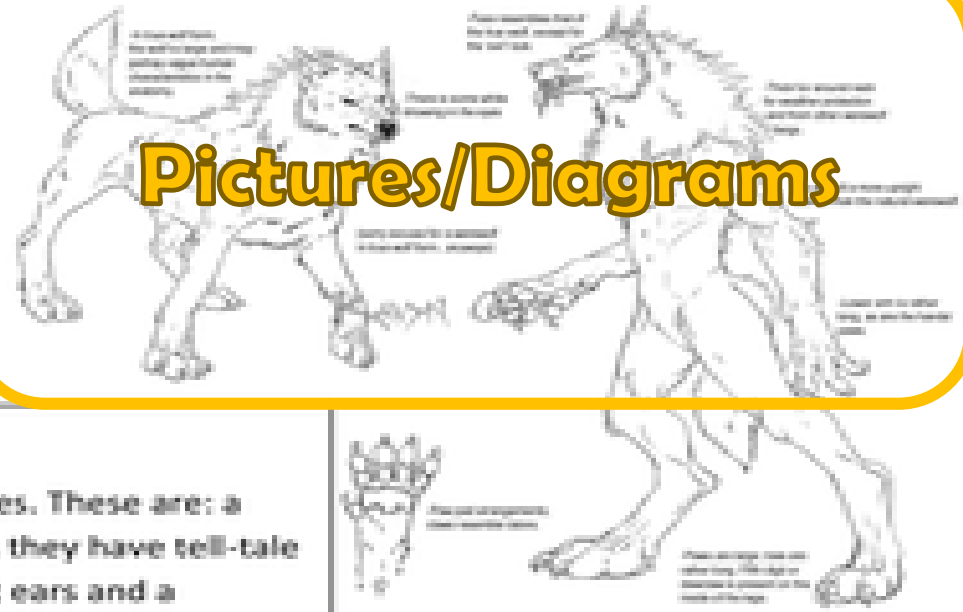


Sub-headings

Shape-shifting ability

Werewolves are humans who transition into wolf-like creatures, either purposefully or after being placed under a curse. Various methods of becoming a werewolf have been reported. In folklore, most werewolves originate from being cursed. **Present Tense & Third person** Historically, most werewolves transform under the light of a full moon. Some historical accounts describe stronger methods of transformation, such as rubbing the body with magic ointment, drinking rainwater out of the footprint of the animal or repeating a set spell. After returning to their human form, werewolves are usually documented as becoming weak, debilitated and undergoing painful, nervous depression.

Pictures/Diagrams



The Bloody Code

Below are the sub-headings you will use. You should have researched these on Monday.

- **What is 'The Bloody Code'?**
- **Why was The Bloody Code introduced?**
- **How did The Bloody Code end?**
- **What were common punishments during this time?**
- **What crimes carried the death penalty during this time?**
- **Facts and statistics (e.g. How many deaths were recorded)**

G	Non-Chronological Report
A	Anyone interested in learning about the Bloody Code
P	To provide information about the Bloody Code

What is 'The Bloody Code'?

The 'Bloody Code' was the name given to the English legal system from the late 17th Century to the early 19th Century. It was known as the Bloody Code because of the huge numbers of crimes for which the death penalty could be imposed. It would seem as if every crime was punishable by death in the 1800s, even those which we would consider to be very minor or trivial today such as stealing a rabbit.