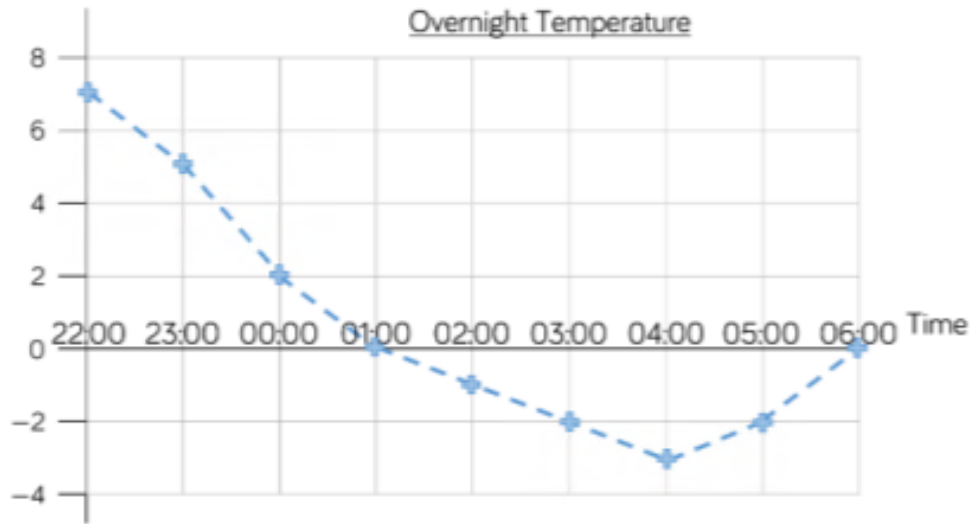
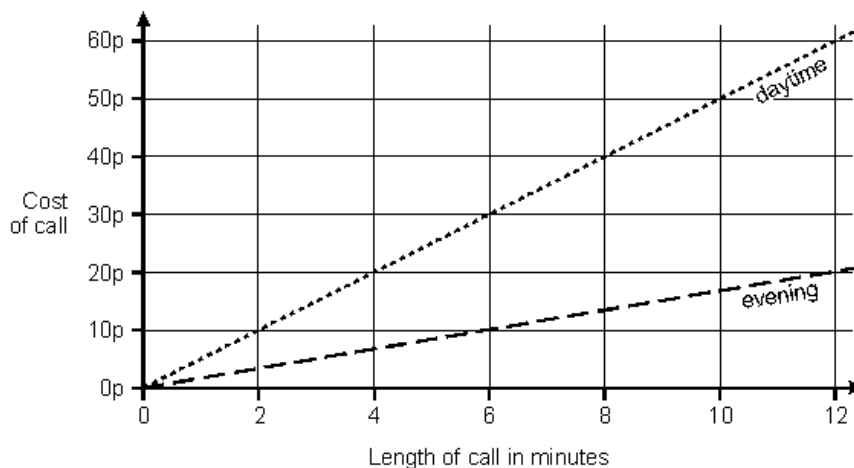


1.



- What was the temperature at 2:30?
- At what time was it 1°C ?
- What was the highest temperature? What time was that?
- What was the lowest temperature? What time was that?
- What is the difference between the highest and lowest temperature?
- How long did the temperature stay at freezing or less?

2. This graph shows the cost of phone calls in the daytime and in the evening.



- How much does it cost to make a **9 minute** call in the **daytime**?
- How much **more** does it cost to make a **6 minute** call in the **daytime** than in the **evening**?
- If you made a 5 minute call in the evening and the daytime, how much would it cost in total?

Answers

1.

- a) What was the temperature at 2:30? -1°C
- b) At what time was it 1°C ? 0:30
- c) What was the highest temperature? What time was that? 7°C at 22:00
- d) What was the lowest temperature? What time was that? -3°C at 4:00
- e) What is the difference between the highest and lowest temperature? 10°C
- f) How long did the temperature stay at freezing or less? 5 hours

2.

- a) How much does it cost to make a **9 minute** call in the **daytime**? 45p
- b) How much **more** does it cost to make a **6 minute** call in the **daytime** than in the **evening**? 10p for evening, 30p in daytime: $30\text{p} - 10\text{p} = 20\text{p}$ more
- c) If you made a 5 minute call in the evening and the daytime, approximately how much would it cost in total? $9\text{p} + 25\text{p} = 34\text{p}$ in total approx