

MA1: Manipulate Calculation
Mr Sid's Maths Minder

$$45.2 + 49.9 = 95.1$$

45.1 **0.1** **49.9**

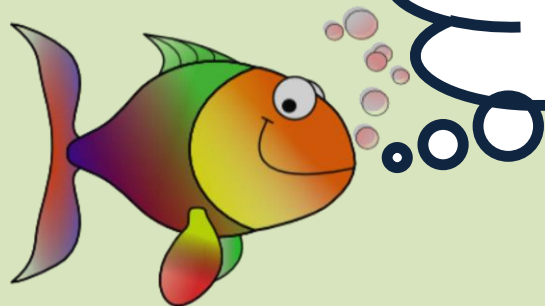
$$45.1 + 50 = 95.1$$

Today is your mental maths quiz.

Time yourself for 10 minutes and see how many you can do. Then take your time to mark them to see where you've gone right or wrong.

Remember to have a growth mindset and try to learn from any mistakes.

Factors, Primes and Multiples



Factor: A number which goes into another number without leaving a remainder

How can we make 12?

$$1 \times 12 = 12$$

$$2 \times 6 = 12$$

$$3 \times 4 = 12$$

So, the factors of 12 are...

1

2

3

4

6

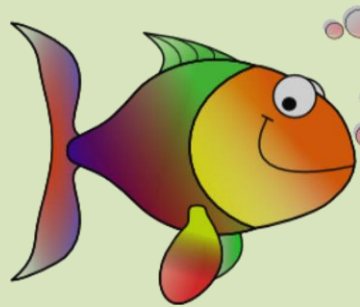
12

Your turn...

What are the factors of...

8? 53?
30? 13? 27?
24?
18? 100? 41?

Some of those numbers only had two factors.



A **Prime Number** is a number that has exactly two factors

13, 17 and 19 are three prime numbers.

Which of these numbers are prime numbers?

3

12

27

7

36

18

11

19

9

Multiples

Multiples are nice and easy. They are numbers that appear in the MULTIPLication tables of any given number.

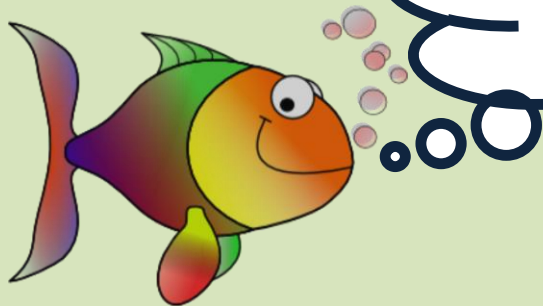
For example:



Which of these numbers above are multiples of 4?

Which numbers are multiples of 9?

Which numbers are multiples of 3?



Multiple: A number which appears in the given number's **MULTIPLICATION** table

1

3

8

12

16

20

13

15

2

17

24

19

6

36

18

7

4

30

From these numbers, find me...

- 6 Factors of 24
- 6 Multiples of 6
- 6 Prime Numbers